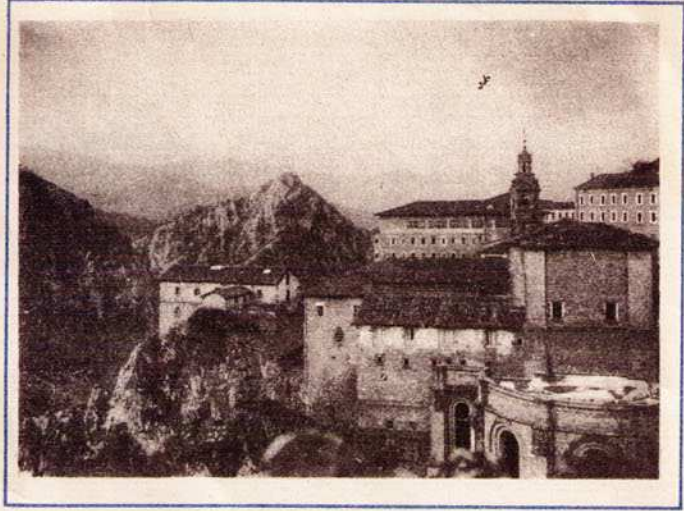


CLIMATE

The climate in the province of Guipuzcoa is mild both in summer and winter. According to official figures the average summer temperature is from 15 to 25° C. and of 12° C. in winter. These figures mean an ideal climate all the year round.

TRIPS

San Sebastian is centre of national and international means of communication. All kind of varied trips can be started from San Sebastian to any place in the province. Served by beautiful roads and a complete net of railways, even the smallest village is within an easy reach. To any way one may direct one's steps, a gratifying and wonderful scenery meets one's sight. Sea, mountain, evergreen



valleys watered by many small rivers and streams, historic little towns abound through this small but unmatched province of Spain.

Monte Ulia.—A good, smooth hilly road leads to the very summit, from which the sight dominates a vast and magnificent view of the town and a great extension of the French and Spanish coasts. A most delightful restaurant situated on the top of Monte Ulia is open during the season. The summit of Monte Ulia can be reached by motor bus (service only during the summer season, starting from the Alameda).

Monte Igeldo.—There are two means of ascending to the top of the mount; a funicular railway, starting on the shore, near the Ondarreta beach, and a magnificent road. Situated on the top, a Restaurant and a Casino offer every kind of attraction with a wonderful park surrounded by pretty little gardens. From there one beholds an incomparable scenery, a striking view of the city at one's feet, and the marvellous panorama of the clifty Basque coast.

Monte Urgull.—It is situated in the city itself, the climb of this hill being a delightful stroll on foot, during which one can enjoy the wonderful panorama offered by the city and the immensity of the sea. It is worthwhile to visit the ruins of the ancient fortress (Castle of «La Mota»), an old military edifice, the ruins of which are interesting only historical, and the English Cemetery, with a monument bearing the following inscription: In memory of the gallant British soldiers who gave their lives for the greatness of their own country and for the independence and liberty of Spain.



Isla Santa Clara.—A little island situated in the centre of the bay, which can be easily reached by canoe or motorboat. There is a safe quay and an easy ascending road to the lighthouse, from where a splendid sight is enjoyed.

San Sebastian - Loyola - Martutene - Astigarraga - Hernani

Round trip: about 28 miles.  
Railway: North Station.  
Tramway: from the Calle Peñaflorida.  
Motorbus: from the Alameda (facing the Market).  
This is a very easy and interesting excursion. A first class road traverses the charming and picturesque valley of Lo-



yola, watered by the Urumea river. Loyola and Martutene are fashionable suburbs with aristocratic chalets. Astigarraga is a small village, famous for its delicious cider, the traditional drink of the Basque people. A few kilometers farther is Hernani, an ancient little place on the skirts of «Monte Santa Bárbara», on the banks of the Urumea.

San Sebastian - Pasajes - Renteria (Lezo) - Irún - Fuenterrabia

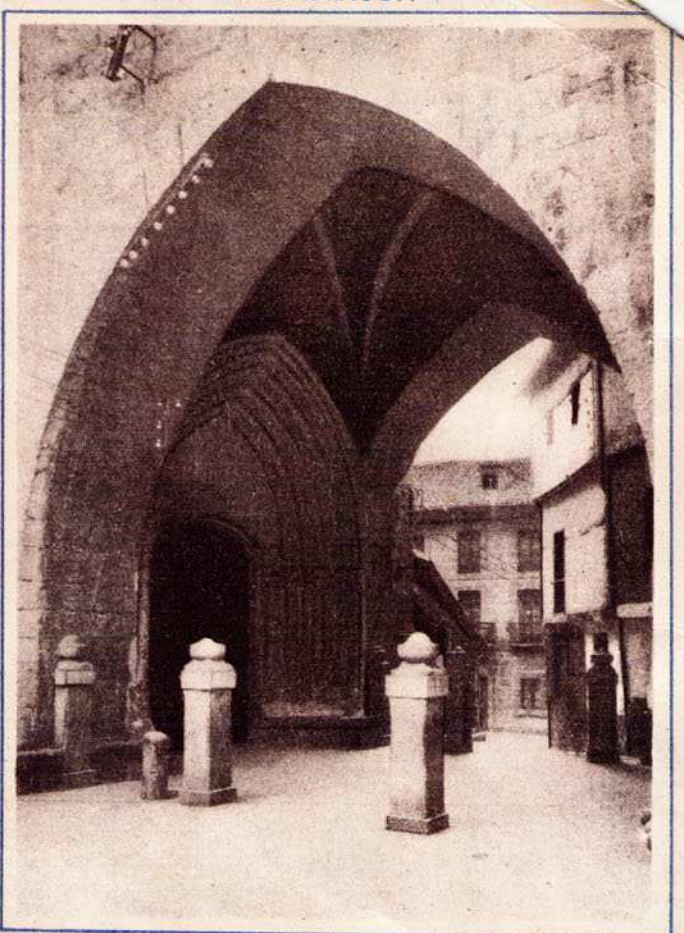
Round trip: about 64 miles.  
Railway: North Station.  
Frontier-railway (topo) from the calle Peñaflorida.  
Tramway: from the Plaza de la Alameda.



Motorbus: from the Plaza de la Alameda.  
Trams and Motorbuses leave every ten minutes from the Alameda Square. It is recommended to alight at Pasajes and cross the bay in a motorboat, so arriving to San Pedro, a very picturesque suburb, important because of its shipyards. Continuing along its only street and following a pretty road beside the sea one arrives at the lighthouse, situated at the entrance of the port. Returning to the point of departure, take another boat during five minutes for the suburb of San Juan, separated from San Pedro by the canal entrance of the bay. It is worthwhile visiting the «House of Victor Hugo», the residence of the immortal writer during the epoch of his exile. Continuing by foot along the



beautiful road that begins at the outskirts of the village one arrives in little more than a quarter of an hour to Lezo, ancient University City. The basilique where the miraculous Christ of Lezo is venerated is a forced visit. Always following the same road, the village of Renteria is reached, very important in Spain because of its numerous and varied industries.  
It is also possible to go from San Sebastian to Renteria by train, motorbus, the North Railway or the Frontier Railway (topo).  
The trip from Renteria to Irún can be made either by the North Railway or by the Frontier Railway. In Irún take the autobus or tram to Fuenterrabia at the Paseo Colon.



San Sebastian - Lasarte - Oria Andoain - Villabona - Tolosa

There is an excellent service of Pullman cars which follow the same line as the train. Passing through Lasarte, the Hippodrome is left to the right; excellent Horse races are celebrated there; the Golf court (Golf Club of Lasarte) is side to side with the Hippodrome.  
After passing Oria, Andoain and Villabona, all small industrious villages, one arrives at Tolosa, the ancient capital of Guipuzcoa, to-day very important as an industry centre.  
All the way to Tolosa the road is very picturesque and entertaining due to the variety of the landscape.  
This excursion can be also made by the North Railway.



San Sebastian - Usurbil - Orio - Zarautz Cestona - Azpeitia - San Ignacio de Loyola

This is one of the most interesting excursions that can be made by train (the Coast railway line) or by road (motorbus).  
By train one leaves San Sebastian from the Amara station and following the picturesque railway line of the coast, Zumarraga is reached, where it is necessary to change to the line of Urola till Loyola.  
There is a magnificent service of motorbuses which leave San Sebastian early in the morning and return in the evening, thus giving sufficient time for the visit of the great Sanctuary of Loyola, called «The Escorial» of Guipuzcoa.

San Sebastian - Oñate

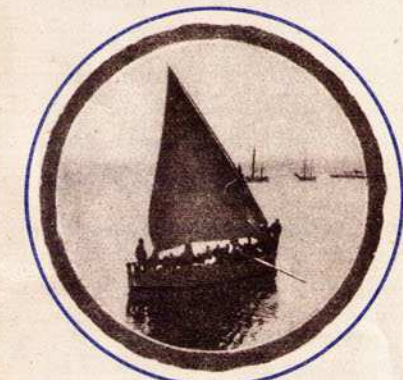
Distance from San Sebastian: 120 miles.  
Oñate, an ancient University city, is one of the most important towns of the province, which conserves wonderful buildings full of artistic details, that give an idea of its ancient splendour.  
Oñate can be visited using the coast railway (Amara Station) or the North Railway. In the coast railway it is necessary to change trains at Malzaga and after at San Prudencio, from where a small branch runs till Oñate. In the North Railway one has to get off at Zumarraga and use motorbus service till Oñate.  
Among the remarkable monuments worthy of attention are the Convent of Santa Ana, the Church of San Miguel and above all the ancient University of Renaissance style.





**PATRONATO NACIONAL DEL TURISMO**  
**JUNTA PROVINCIAL**  
Information Bureau:  
**CENTRO DE ATRACCION Y TURISMO**  
Bajos del teatro Vitoria Eugenia Telef. 12038  
**SAN SEBASTIAN**

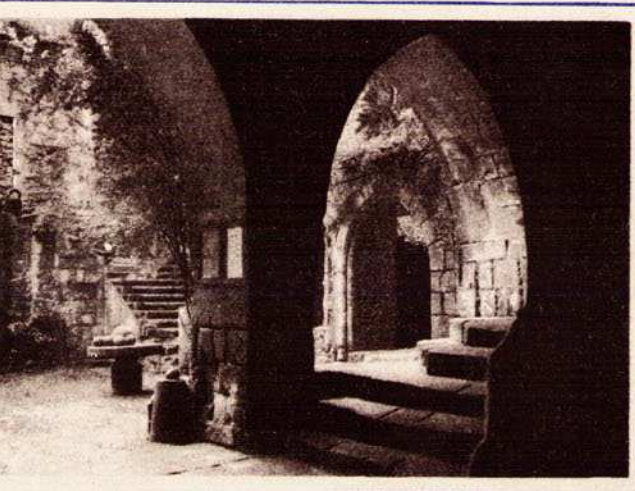
Fuenterrabia.—General view.



**FUENTERRABIA.**—Picturesque town at the mouth of the river Bidasoa, possessing an extense and beautiful beach.

A modern plan of the town has been lately achieved making Fuenterrabia an ideal summer resort. Fuenterrabia is moreover a historical town, in which many traces of the past are met, being the most important, the walls (declared National Monument), the Castle of Charles V, the houses of Echeveste, Casadevante and Zuloaga. Fuenterrabia has a lovely countryside and sea-side walks from where the bold cliffs of France and Spain can be easily seen.

COMMUNICATIONS.



Fuenterrabia.—Gate of the Castle of Charles V.

Concha: Full board from 17 to 45 pesetas. Lunch 7 pesetas. Bath.—Hotel del Peñón: Full board from 12 to 25 pesetas. Lunch 8 pesetas. Bath.—Hotel Olegario: Full board from 12 to 18 pesetas. Lunch 7 pesetas. Bath.

**DEVA.**—It is a clean, little town with a charming beach within the easy reach of Bilbao and San Sebastian, on the railway and road which joins these two towns. This

—Tramways and buses to Irun and from there to San Sebastian by railway (North Railway Line and the Frontier Railway line).

**HOTELS.**—Hotel de France: Full board from 12 to 16 pesetas. Lunch 7 pesetas. Bath.—Hotel

privileged situation and its sure and fine sands makes Deva the ideal place for those who seek a quiet summer holiday.

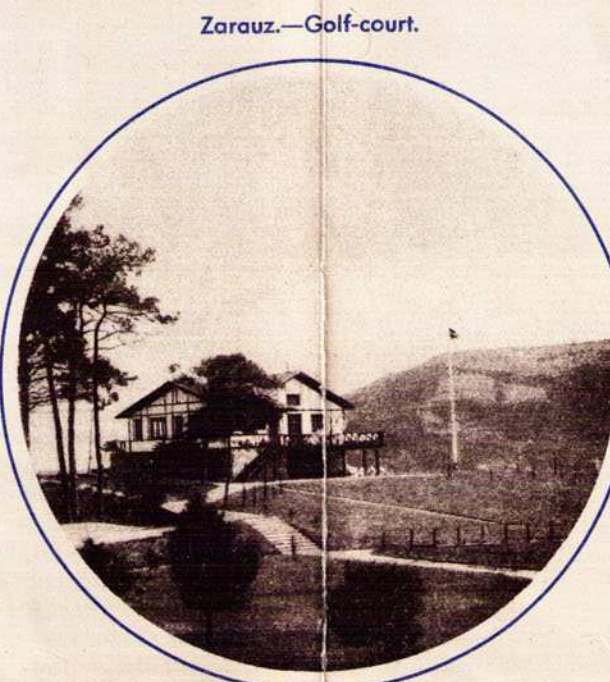
**COMMUNICATIONS.**—Railway from San Sebastian (Amara Station).

**HOTELS.**—Hotel Deva: Full board from 13,50 to 28 pesetas. Lunch 7 pesetas. Bath.—Hotel Monreal: Full board from 12 to 15 pesetas. Lunch 7 pesetas. Bath.—Hotel Celaya: Full board from 11 to 14 pesetas. Lunch 6 pesetas.—Hotel de la Playa: Full board from 10 to 13 pesetas. Lunch 5 to 8 pesetas.—Hotel Restaurant Iriondo: Full board 10 pesetas. Lunch 6 pesetas.

**ZUMAYA.**—A very picturesque fishing port on the mouth of the river Urola. It counts with a pretty bay and a small but very fashionable beach. The country side is quite full of a large number of beautiful villas.

The celebrated painter Ignacio Zuloaga has one of these villas of the peculiar Basque style, which is his summer residence and also a small museum much visited by tourists.

**COMMUNICATIONS.**—Railway from San Sebastian (Amara Station) and Motor Buses starting from the Plaza Guipuzcoa, 2.



Zarauz.—Golf-court.

**HOTELS.**—Hotel Amaya: Full board from 16 to 30 pesetas. Lunch 10 pesetas. Garage.—Hotel Erreketa: Full board from 10 to 12 pesetas. Lunch 5,50 pesetas.—Hotel Alameda: Full board from 8 to 12 pesetas. Lunch 4 pesetas.

**ZARAUZ.**—Zarauz is attractive because of its ideal climate; golden and fashionable beach, and lovely natural surroundings. It combines the charm of the sea with the healthy mountain, saturated by the scent of the pines and a lovely meadow, full of little villas and country houses. This gives visitors an occasion for agreeable sight-seeing excursions. Zarauz is also a good centre for sports, counting with golf links, tennis courts, etc., organizing frequently all kinds of sport competitions.

The bathing season lasts about three months (from July to Septiembre).

The Hotels enjoy a high reputation being in possession of all modern comforts, and in addition there are fine villas, which can be rented at reasonable prices.

**COMMUNICATIONS.**—Railway from San Sebastian (Amara Station). Travellers may also use the bus line starting from the Plaza Guipuzcoa, 2, San Sebastian.

**HOTELS.**—Gran Hotel: Full board from 20 to 40 pesetas. Lunch 9 pesetas.—Gran Hotel «La Perla»: Full board from 18

to 30 pesetas. Lunch 8 pesetas.—Hotel Maitena: Full board from 18 to 25 pesetas. Lunch 8 pesetas.—Hotel Miramar: Full board from 16 to 20 pesetas. Lunch 7 pesetas.—Hotel de la Playa: Full board from 18 to 25 pesetas. Lunch from 8 to 10 pesetas.—Hotel Eguzki: Full board from 15 to 18 pesetas. Lunch 7 pesetas.—Hotel Alameda: Full board from 14 to 18 pesetas. Lunch 7 pesetas.—Hotel Otamendi: Full board from 11 to 18 pesetas. Lunch 7 pesetas.—Hotel Amilibia: Full board 12 pesetas. Lunch 5 pesetas.—Hijos

Zumaya.—Zuloaga's country Rous.



de Cleri: Full board 12 pesetas. Lunch 5 pesetas.—Hotel Navarro: Full board from 10 to 15 pesetas. Lunch 5,50 pesetas.—Pension Lasheras: Full board from 7 to 10 pesetas. Lunch 5 pesetas

**GUETARIA.**—Very near Zarauz (4 kilometers) and communicating with it by a beautiful sea-side road is Guetaria, a little fishing village, where the celebrated sai-

THE notes contained in this pamphlet will give a rough idea of locality. Those relating to hotels have no other motive and are not to be taken as a recommendation or otherwise.

More details and all kind of information can be obtained without charge at the following.

**INFORMATION BUREAUX**  
OF THE  
**PATRONATO NACIONAL DEL TURISMO**  
(National Board of TRAVEL)

ALGECIRAS.—Puerto.—Tel. 24.  
ALICANTE.—Ayuntamiento  
AVILA.—Estrada, 12, duplicado.  
Teléfono 118.  
BADAJOZ.—Plaza Minayo (antiguo Seminario).—Teléfono 576.  
BARCELONA.—Cortes, 638.—Teléfono 20.923.  
BEHOBIA.—Frente a la Aduana.—Teléfono 234.  
BILBAO.—Paseo del Arenal.—Teatro Arriaga.—Teléfono 17.341.  
BURGOS.—Paseo del Espolón (Edificio del Teatro).—Tel. 825 R.  
CACERES.—Ayuntamiento.  
CADIZ.—Puerto.—Teléfono 1.313.  
CARTAGENA.—Subida de las Monjas, 2.  
CASTELLON.—Diputación Provincial.  
CORDOBA.—Gran Capitán, 11.—Teléfono 1.205.  
CUENCA.—Cervantes, 4.—Tel. 174.  
EL ESCORIAL.—Monasterio.—Teléfono 88.  
GIJON.—Rosario Acuña, 24 y 26.—Teléfono 119.  
GRANADA.—Casa de los Tiros.—Teléfono 1.022.  
GUADALAJARA.—Ayuntamiento.—Teléfono 119.  
HUESCA.—Diputación Provincial.—Teléfono 166.  
IRUN.—Estación del Norte.—Teléfono 402.  
JAEN.—Palacio Provincial.—Teléfono 336.  
JATIVA.—Paseo de la Alameda.  
LA CORUÑA.—Dársena de la Marina.—Teléfono 1.822.  
LA JUNQUERA.—Aduana (Interprete destacado).—Teléfono 4 y 5.  
LAS PALMAS.—  
LEON.—Fernando Morino, 1.—Teléfono 1.527.  
MADRID.—Oficina Central: Medinaelli, 2.—Teléfono 92.839.  
MALAGA.—Muelle de Guadalupe.—Teléfono 3.541.

MURCIA.—Diputación Provincial  
ORENSE.—Diputación Provincial  
OVIEDO.—Diputación Provincial  
PALENCIA.—Diputación Provincial.  
PALMA DE MALLORCA.—Paseo del Borne, 88 y 40.—Tel. 2.216.  
PAMPLONA.—Cortes de Navarra, 1.—Teléfono 1.287.  
PONTEVEDRA.—Gregorio Hernández Museo.—Teléfono 161.  
PORT-BOU.—Estación M. Z. A.—Teléfono 87.  
PUIGCERDA.—Igualtat, 2.—Teléfono 4.  
RONDA.—Plaza de la República, 1 duplicado.  
SALAMANCA.—Plaza del Poeta Iglesias (Gran Hotel).  
SAN SEBASTIAN.—Teatro Victoria.—Teléfono 12.083.  
SANTA CRUZ DE TENERIFE.—Cabildo.—Teléfono 438.  
SANTANDER.—Avenida de Galdan y Hernández.—Tel. 1.417.  
SANTIAGO DE COMPOSTELA.—Plaza de Pablo Iglesias (Embarcadero).—Tel. 18-11.  
SEGOVIA.—Ayuntamiento.—Teléfono 16.  
SEVILLA.—Ayuntamiento.—Plaza de San Francisco.—Tel. 21.404.  
SORIA.—Plaza R. B. Aceña, 4.—Teléfono 29.  
TARRAGONA.—Rambía 14 (Abel).  
TETUAN.—Sidi Mandri, 1 (Puerta de Tángier).  
TOLEDO.—Plaza Zocodover, 25.—Teléfono 103.  
VALENCIA.—Ayuntamiento.—Teléfono 13.585.  
VALLADOLID.—Angustias, 4.—Teléfono 1.629.  
VIGO.—Jardines de Elduayen.—Teléfono 2.752.  
ZARAGOZA.—Plaza Sas, 7.—Teléfono 1.117.  
ZAMORA.—Viriato, 3.—Tel. 326.

FOREIGN AGENCIES

PARIS.—12, Bd. Malesherbes. (Tel. Opéra 08-97). GIBRALTAR.—63-67, Main Street. BUENOS AIRES.—Venticinco de Mayo de 1558. BRUXELLES. 19, Science.—Representative of P. N. T.

UNION GRAFICA, S. L.—TOLESA

Deva.—The beach.



lor Juan Sebastian Elcano, who was first to round the world, was born, and to whom an original monument has been erected lately, executed by Victorio Macho.

Guetaria is a very typical little village, and perhaps one of the most wonderful places on the sea shore, which offers a beautiful sight, especially from the main road, which is like all the roads of Guipuzcoa—smooth and well kept.

**HOTELS.**—Hotel Regina: Full board from 9 to 12 pesetas.

